

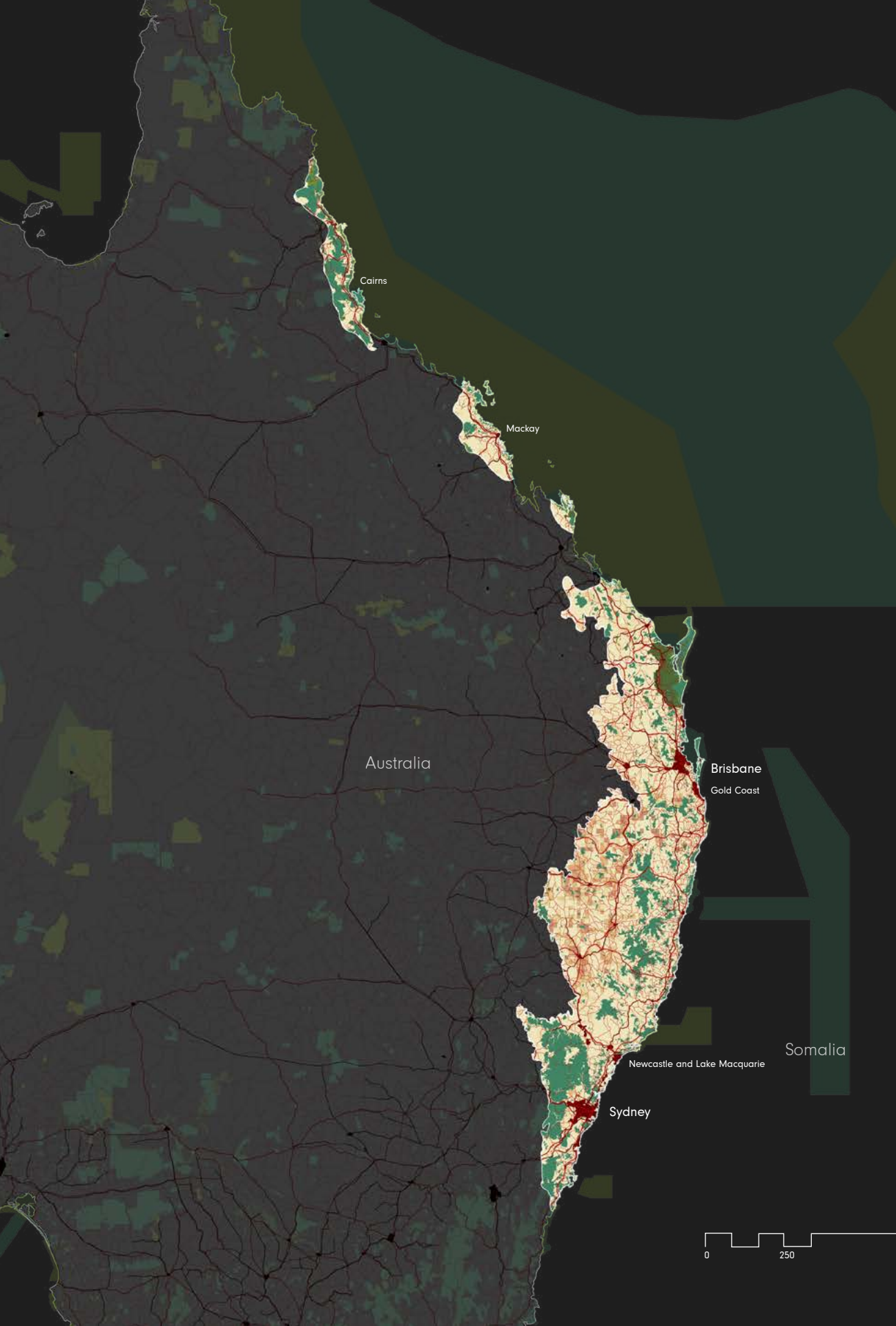
# FORESTS OF EASTERN AUSTRALIA

330,154 km<sup>2</sup>



## BIODIVERSITY TARGET

2020 TARGET: 17% protected

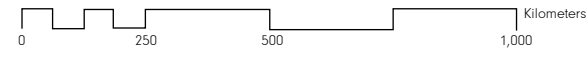


- Forests of Eastern Australia Hotspot
- Neighboring Hotspot
- Protected Area (IUCN Category I-IV)
- Protected Area (IUCN Category V-VI)
- Protected Area (IUCN Category NA)
- Urban Area
- Agriculture (0-100% landuse)
- Roads
- Railroads



# FORESTS OF EASTERN AUSTRALIA ECOREGIONS

Shortfall Assessment to reach Target of 17% protected land in each terrestrial ecoregion



Australia

2 BIOMES

Temperate Broadleaf & Mixed Forests

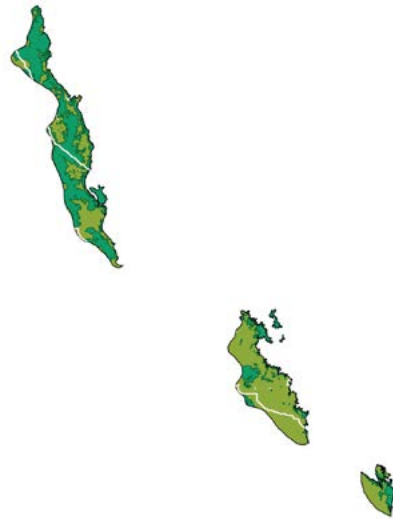
Tropical & Subtropical Moist Broadleaf Forests

2 ECOREGIONS

### 1. Queensland Tropical Rain Forests

20,731 km<sup>2</sup> remnant habitat

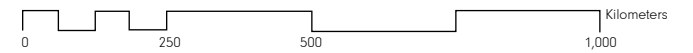
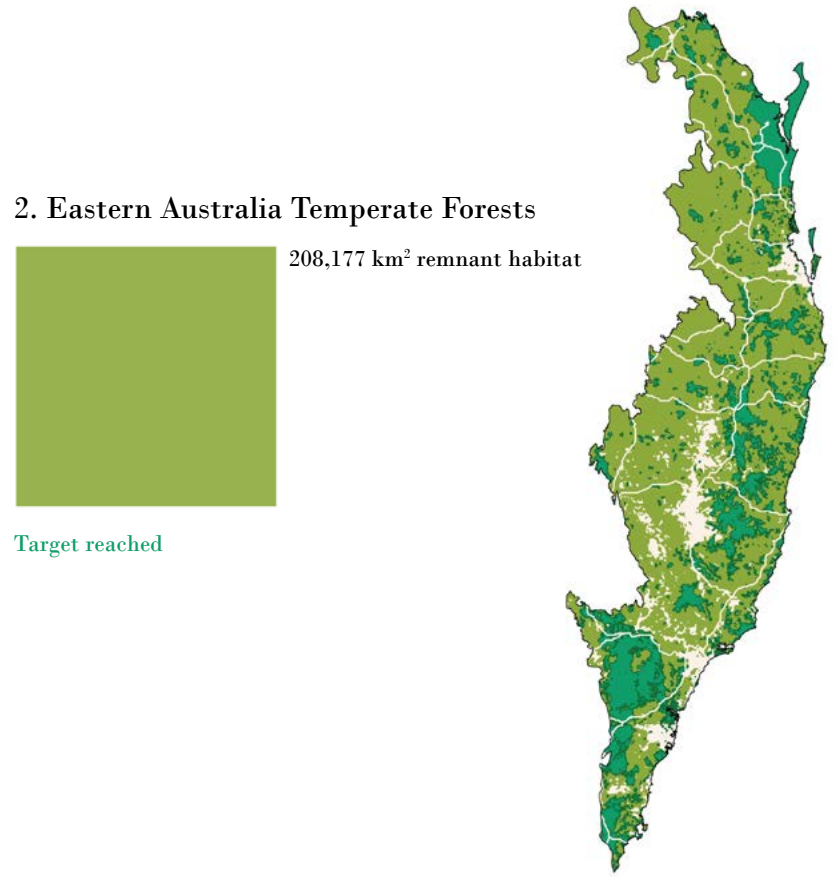
Target reached



### 2. Eastern Australia Temperate Forests

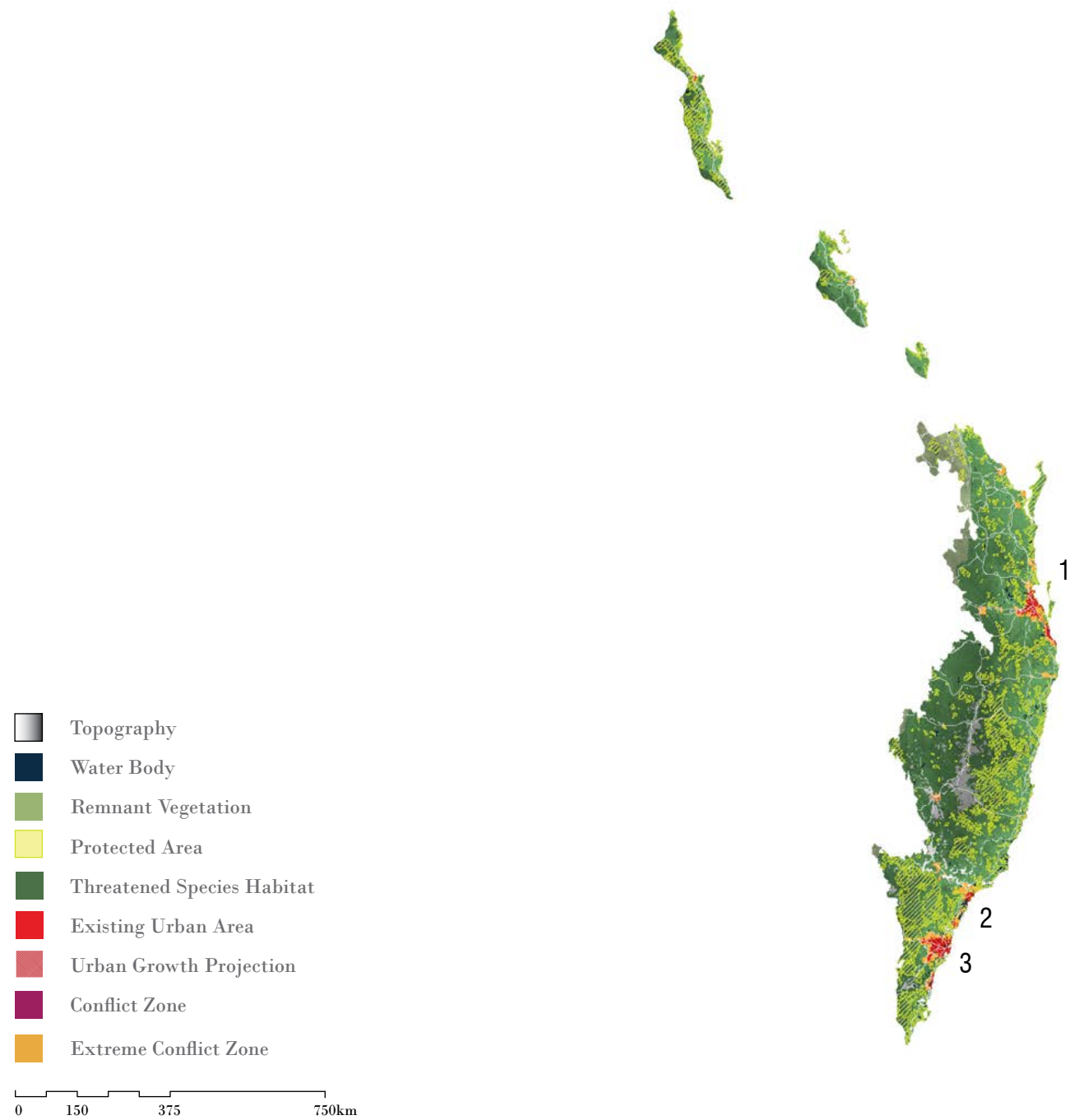
208,177 km<sup>2</sup> remnant habitat

Target reached



# FORESTS OF EASTERN AUSTRALIA | CONFLICTS

Conflicts between 2030 projected urban growth areas and threatened species habitats





## 7,080,000 Population

---

2015 URBAN POPULATION

8,485,000

2030 URBAN POPULATION

49

THREATENED MAMMAL SPECIES

MAJOR CROPS

wheat, sorghum, oats

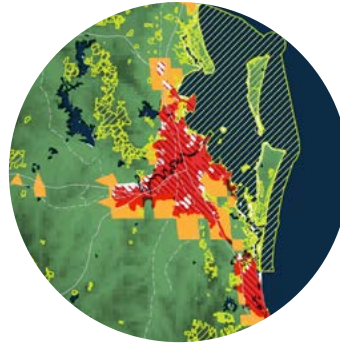
BIODIVERSITY THREATS

Agricultural Expansion

Deforestation

Mining

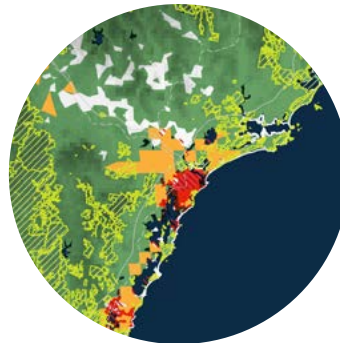
Poaching



### 1. BRISBANE, AUSTRALIA

POPULATION PROJECTIONS:

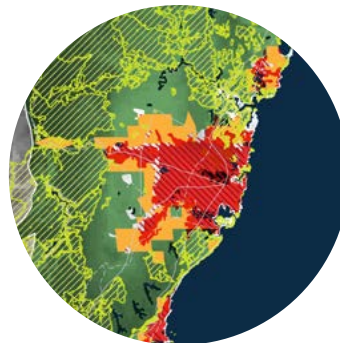
<u>2015:</u>	<u>2030:</u>
2,202,000	2,721,000



### 2. NEWCASTLE, AUSTRALIA

POPULATION PROJECTIONS:

<u>2015:</u>	<u>2030:</u>
373,000	463,000



### 3. SYDNEY, AUSTRALIA

POPULATION PROJECTIONS:

<u>2015:</u>	<u>2030:</u>
4,505,000	5,301,000